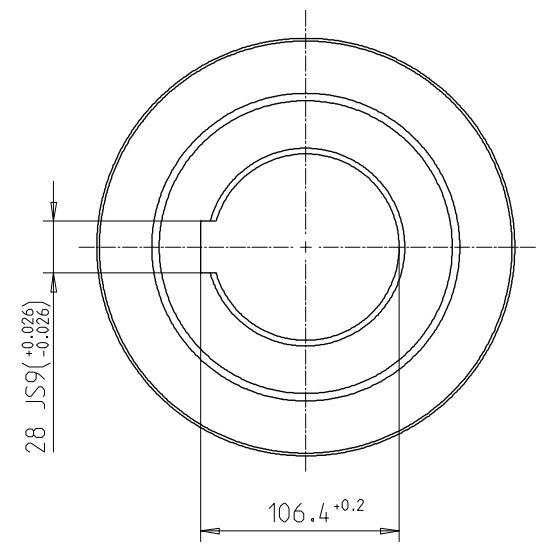
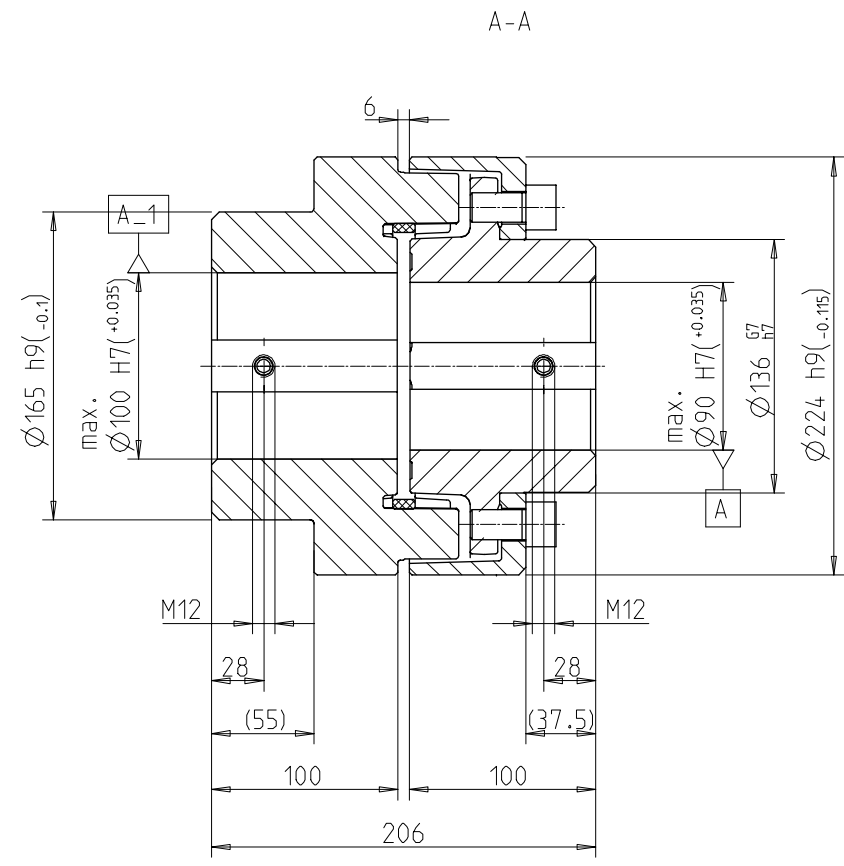
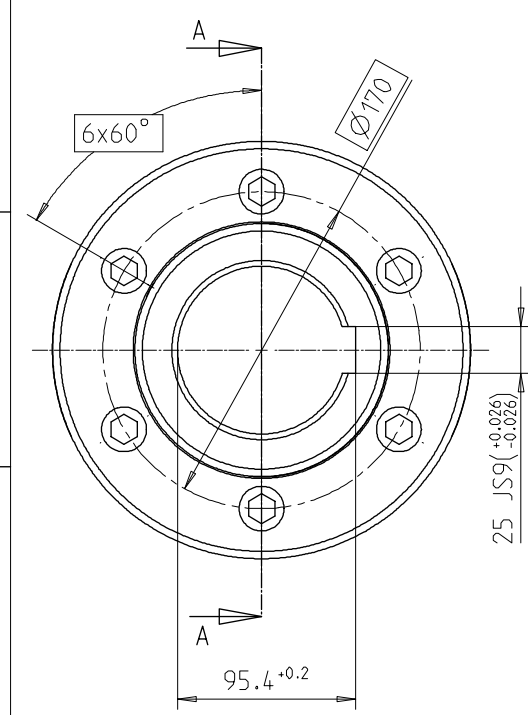
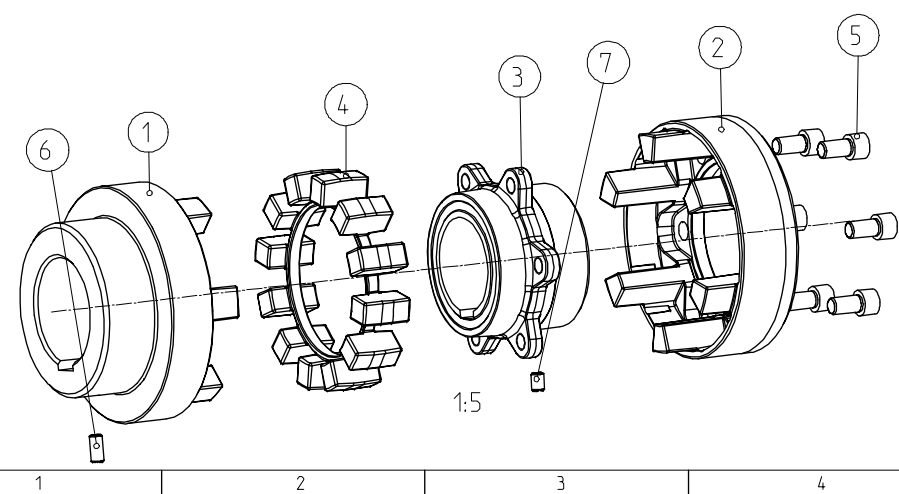


NAME: KNOBLICH OBJECT: 403526 DATE: 02-Dec-02 12:01:33




Drehmoment / Torque  
 Elastomerring / elastomer ring  
 NBR 78 Shore A  
 $T_{KN} = 2900 \text{ Nm}$   
 $T_{Kmax} = 5800 \text{ Nm}$

POLY-NORM	Gewicht weight [kg]	Massenträgheitsmoment mass moment of inertia [kgm <sup>2</sup> ]
Kupplungshälfte Teil 1 coupling half part 1	13.245	0.083828
Kupplungshälfte Teil 2+3 coupling half part 2+3	14.072	0.093513
Elastomerring Teil 4 elastomer ring part 4	0.512	0.004106
Komplette Kupplung complete coupling	27.829	0.181447



Schraubenanzugsmoment Teil 5-M16x30 DIN 912-12.9,  $T_A = 295 \text{ Nm}$   
 screw tightening torque part 5-M16x30 DIN 912-12.9,  $T_A = 295 \text{ Nm}$

Oberflächengüte nach DIN ISO 1302 Reihe 2 Surface quality acc. to DIN ISO 1302 Line 2		Schutzvermerk nach DIN 34 beachten Note protection mark acc. to DIN 34			
Allgemeintoleranzen nach DIN ISO 2768 - mH General tolerances acc. to DIN ISO 2768-		Maßstab Scale	7:20	Format DIN Size	A3
POLY-NORM 100 Bauart ADR			 KTR-Kupplungstechnik GmbH D-48407 Rheine		
Datum	02.12.02	Werkstoff Material	DIN	Teilnummer Part number	Kz
Name	K0	Gewicht Weight	27.829		
					Lfd.-Nr. Current number
					403526
					Index Change
					0